
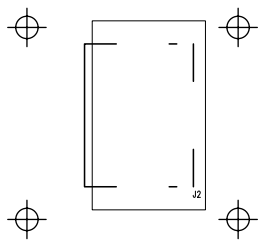


Copyright (c) 2008 Elphel, Inc.  
 Permission is granted to copy, distribute and/or modify this document under the terms of the GNU Free Documentation License, Version 1.2 or any later version published by the Free Software Foundation; with no Invariant Sections, no Front-Cover Texts, and no Back-Cover Texts. A copy of the license is included in the section entitled "GNU Free Documentation License".

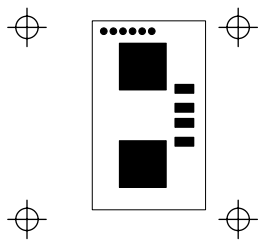
<b>Model 353</b>		 <b>Elphel, Inc</b> <small>http://www.elphel.com</small>	1 OF 1
<b>USB Adapter</b>			DESIGNED <b>Andrey Filippov</b>
NEXT ASSY	<b>1D203693</b>		DRAWN <b>Andrey Filippov</b>
USED	QTY <b>1</b>	REV <b>0</b> ECN #	DATE <b>03/02/2008</b>
FILE <b>103693</b>	<b>803693</b>	DATE	PRINTED <b>3/3/2008 AT 10:54:18 AM</b>

SUB-ASSEMBLY															
USAGE	#		NO.					RELEASE DATE	03/02/08	P/L	REV.	REV.	Units to	Total	Cost per
353	1		TITLE	Model 353 USB Adapter PCB Assembly 803693				JOB#	N/A	3/2/2008	0		1	\$7.37	\$7.37
		# TO	MFGR	1				WORK ORDER #	N/A						
		NEXT	ASSY	4A-?????				NON STANDARD NOTATIONS							
DESIGNATOR	ITEM	QTY	EXT	STK	ROHS	DESCRIPTION		PART	MANUFAC	VENDOR	PURCH	UNIT	TOTAL	NEW	
NUMBER	#	REQ	QTY	CHK			#	TURER	VENDOR	PART #	QTY	PRICE		STOCK	
<b>Related Documents</b>															
	0.5	1	1			Schematic 103693 (803693), Model 353	1D203693 Rev.0	Designed by Andrey Filippov							
	20	1	1			Fabrication (803693), Model 353	4F203693 Rev.0								
	21	1	1			Artwork (803693), Model 353	4G203693 Rev.0								
<b>Capacitors</b>															
C1	40	1	1		Y	Capacitor, Ceramic Chip, 0.1µF, 10V, C0402D	C0402C104K8PA CTU	Kemet	Digi-Key	399-3027-1-ND	10	0.083	0.83	9	
<b>Inductors and LC filters</b>															
L1-L2	41	2	2		Y	SMD Inductor, 120 Ohm, 1.2A, SMD 0402	MPZ1005S121C	TDK	Digi-Key	445-2981-1-ND	2	0	0	0	
<b>Connectors</b>															
J1	42	1	1		Y	0.5 mm-Pitch Flip-Lock FPC Connector, top contact, 10 pos., FH12A-10S-0.5SH55	FH12A-10S-0.5SH55	Hirose	Digi-Key	HFK110CT-ND	1	1.77	1.77	0	
J2	43	1	1		Y	USB type A Female connector, Right Angle, SMT, 1A, 54366-0478	54366-0478	Molex	Mouser	538-54366-0478	1	4.77	4.77	0	

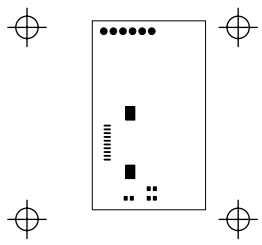


SILKSCREEN TOP			

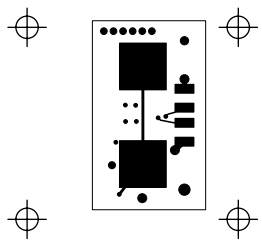




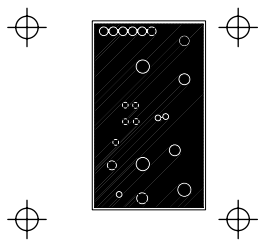
	SOLDER MASK TOP		



		SOLDER MASK BOTTOM	

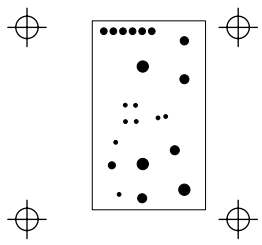


TOP SIDE (LAYER-1)			
	COMPONENT COPPER TOP (L-18)		

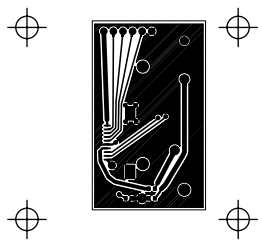


	GND PLANE (LAYER-2)		

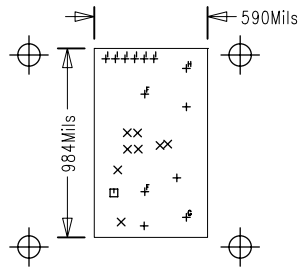




		PWR PLANE (LAYER-3)	



			BOTTOM SIDE (LAYER-4)
			COMPONENT COPPER BOTTOM (L-19)



DRILL DRAWING			

SIZE	QTY	SYM	PLTD
32	3	+	PLTD
10	8	X	PLTD
22	1	□	PLTD
39.37	2	F	PLTD
59.06	1	G	PLTD
43.31	1	H	NPLTD
25	6	I	PLTD



	PASTE TOP		



			PASTE BOTTOM