
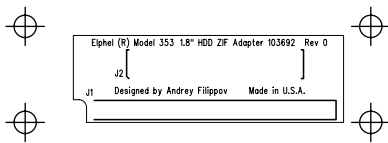


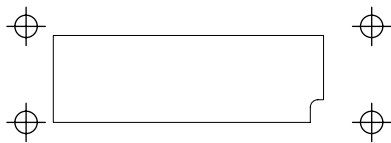
Copyright (c) 2008 Elphel, Inc.  
 Permission is granted to copy, distribute and/or modify this document under the terms of the GNU Free Documentation License, Version 1.2 or any later version published by the Free Software Foundation; with no Invariant Sections, no Front-Cover Texts, and no Back-Cover Texts. A copy of the license is included in the section entitled "GNU Free Documentation License".

<b>Model 353</b>		 Elphel, Inc <small>http://www.elphel.com</small>	1 OF 1
<b>1.8 in. HDD adapter</b>			DESIGNED <b>Andrey Filippov</b>
NEXT ASSY	<b>1D203692</b>	DRAWN	<b>Andrey Filippov</b>
USED	QTY 1	DATE	<b>02/29/2008</b>
FILE <b>103692</b>	<b>803692</b>	REV 0 ECN #	PRINTED 2/29/2008 AT 9:22:28 PM

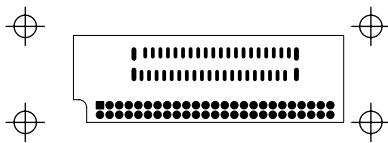
SUB-ASSEMBLY														
	USAGE	#		NO.		4A203692	RELEASE DATE	03/05/08	P/L	REV.	REV.	Units to	Total	Cost per
	353	1		TITLE		Model 353 1.8 in. HDD adapter PCB Assembly 803692	JOB#	N/A	2/29/2008	LTR	DATE	Build	Cost	Unit
			# TO	MFGR		1	WORK ORDER #	N/A						
			NEXT	ASSY		4A-?????	NON STANDARD NOTATIONS							
DESIGNATOR	ITEM	QTY	EXT	STK	ROHS	DESCRIPTION	PART	MANUFAC	VENDOR	VENDOR	PURCH	UNIT	TOTAL	NEW
NUMBER	#	REQ	QTY	CHK			#	TURER	VENDOR	PART #	QTY	PRICE	TOTAL	STOCK
						<b>Related Documents</b>								
	0.5	1	1			Schematic 103692 (803692), Model 353	1D203692 Rev.0	Designed by Andrey Filippov						
	20	1	1			Fabrication (803692), Model 353	4F203692 Rev.0							
	21	1	1			Artwork (803692), Model 353	4G203692 Rev.0							
						<b>Connectors</b>								
J2	40	1	1		Y	0.5 mm-Pitch Vertical Slide-Lock FPC Connector, 40 pos., FH1240S05SV	FH12-40S-0.5SV-55	Hirose	Digi-Key	HFL140CT-ND	1	3.65	3.65	0
J1	41	1	1		Y	Connector header, 0.05" pitch, dual row, 50 contacts, vertical, through hole, FTS-125-01-L-D-MOD	FTS-125-01-L-D	Samtec	Digi-Key	SAM1156-25-ND	1	5.92	5.92	0



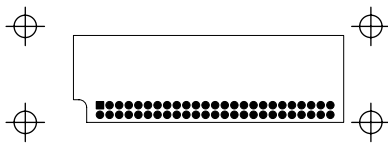
SILKSCREEN TOP			



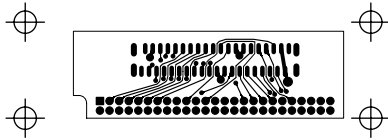
SILKSCREEN BOTTOM			



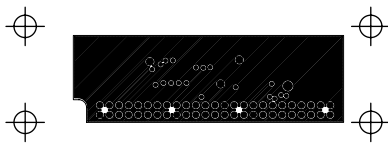
	SOLDER MASK TOP		



		SOLDER MASK BOTTOM	

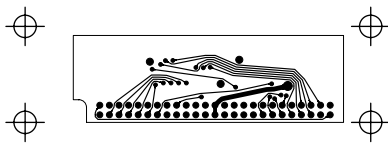


TOP SIDE (LAYER-1)			
	COMPONENT COPPER TOP (L-18)		

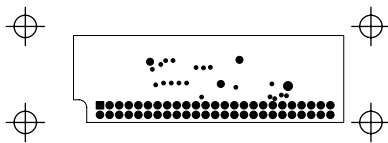


	GND PLANE (LAYER-2)		

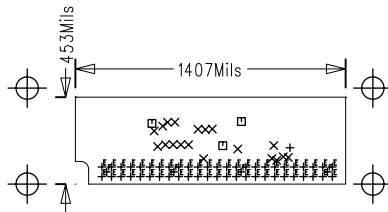




		PWR PLANE (LAYER-3)	



			BOTTOM SIDE (LAYER-4)
			COMPONENT COPPER BOTTOM (L-19)



DRILL DRAWING			

SIZE	QTY	SYM	PLTD
32	1	+	PLTD
10	19	X	PLTD
22	3	□	PLTD
21.65	50	E	PLTD
31.5	4	F	PLTD



	PASTE TOP		



			PASTE BOTTOM