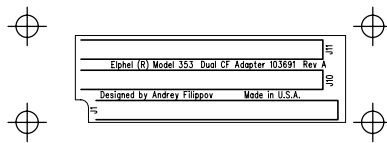


PINS 25,26 are grounded inside CF
 PIN39 CSEL: Grounded - master, open - slave

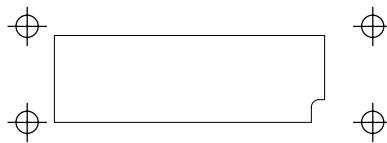
Copyright (c) 2007-2008 Elphel, Inc.
 Permission is granted to copy, distribute and/or modify this document under the terms of the GNU Free Documentation License, Version 1.2 or any later version published by the Free Software Foundation; with no Invariant Sections, no Front-Cover Texts, and no Back-Cover Texts. A copy of the license is included in the section entitled "GNU Free Documentation License".

Model 353		Dual CF Adapter		 Elphel, Inc http://www.elphel.com		1 OF 1	
NEXT ASSY		1D203691		DESIGNED Andrey Filippov		DRAWN Andrey Filippov	
USED	QTY 1	REV A ECN #		DATE 12/19/2007		PRINTED 2/29/2008 AT 9:59:34 AM	
FILE 103691A	803691	DATE 29/02/2008					

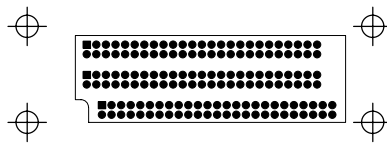
SUB-ASSEMBLY																
USAGE	#		NO.					RELEASE DATE	03/05/08	P/L	REV.	REV.	Units to	Total	Cost per	
				4A203691						DATE	LTR	DATE	Build	Cost	Unit	
353	1			TITLE				Model 353 Dual CF Adapter PCB Assembly 803691	JOB#	N/A	12/19/2007	A	29/02/2008	1	\$17.76	\$17.76
			# TO	MFGR	1				WORK ORDER #	N/A						
			NEXT	ASSY	4A-?????				NON STANDARD NOTATIONS							
DESIGNATOR	ITEM	QTY	EXT	STK	ROHS	DESCRIPTION		PART	MANUFAC	VENDOR	PURCH	UNIT	NEW			
NUMBER	#	REQ	QTY	CHK				#	TURER	VENDOR	PART #	QTY	PRICE	TOTAL	STOCK	
Related Documents																
	0.5	1	1			Schematic 103691a (803691), Model 353		1D203691 Rev.A	Designed by Andrey Filippov							
	20	1	1			Fabrication (803691), Model 353		4F203691 Rev.A								
	21	1	1			Artwork (803691), Model 353		4G203691 Rev.A								
Connectors																
J1, J10-J11	40	3	3		Y	Connector header, 0.05" pitch, dual row, 50 contacts, vertical, through hole, FTS-125-01-L-D		FTS-125-01-L-D	Samtec	Digi-Key	SAM1156-25-ND	3	5.92	17.76	0	



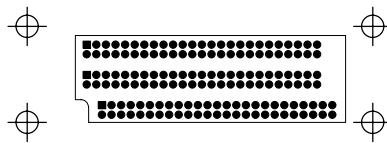
SILKSCREEN TOP			



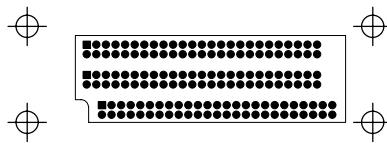
SILKSCREEN BOTTOM			



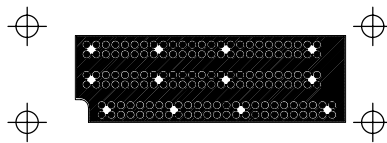
	SOLDER MASK TOP		



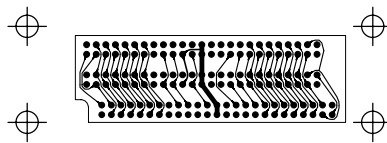
		SOLDER MASK BOTTOM	



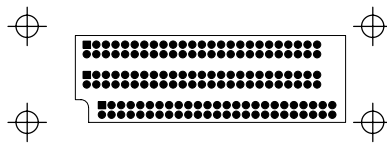
TOP SIDE (LAYER-1)			
	COMPONENT COPPER TOP (L-18)		



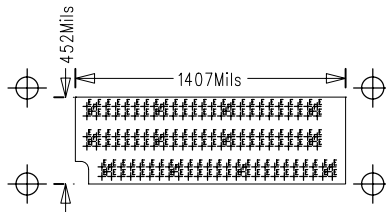
	GND PLANE (LAYER-2)		



		PWR PLANE (LAYER-3)	



			BOTTOM SIDE (LAYER-4)
			COMPONENT COPPER BOTTOM (L-19)



DRILL DRAWING			

SIZE	QTY	SYM	PLTD
21.65	150	E	PLTD
31.5	12	F	PLTD



	PASTE TOP		



			PASTE BOTTOM