
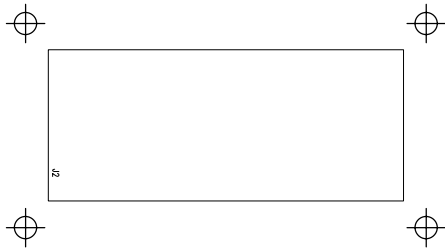


Copyright (c) 2011 Elphel, Inc.  
 Permission is granted to copy, distribute and/or modify this document under the terms of the GNU Free Documentation License, Version 1.3 or any later version published by the Free Software Foundation; with no Invariant Sections, no Front-Cover Texts, and no Back-Cover Texts. A copy of the license is included in the section entitled "GNU Free Documentation License".

<b>Model 353</b>				1 OF 1
<b>IMU Adapter</b>				DESIGNED <b>Andrey Filippov</b>
NEXT ASSY	1D203695		DRAWN <b>Andrey Filippov</b>	1
USED	QTY 1	REV <b>A</b> ECN #	DATE <b>02/11/2011</b>	
FILE <b>103695A</b>	<b>803695</b>	DATE <b>05/11/2011</b>	PRINTED 5/13/2011 AT 3:18:42 PM	

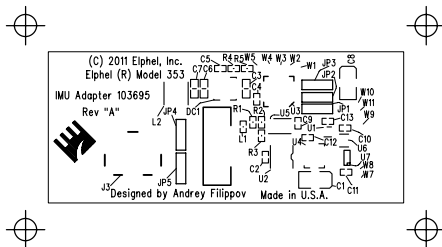
SUB-ASSEMBLY														
USAGE	#		NO.			RELEASE DATE	05/13/11	P/L	REV.	REV.	Units to	Total	Cost per	
353	1		TITLE			JOB#	N/A	DATE	LTR	DATE	Build	Cost	Unit	
Model 353 IMU Adapter PCB Assembly 803695														
PCB Assembly 803695														
# TO	MFGR					WORK ORDER #	N/A							
NEXT	ASSY					NON STANDARD NOTATIONS								
DESIGNATOR	ITEM	QTY	EXT	STK	ROHS	DESCRIPTION	PART	MANUFAC	VENDOR	VENDOR	PURCH	UNIT	NEW	
NUMBER	#	REQ	QTY	CHK			#	TURER	VENDOR	PART #	QTY	PRICE	TOTAL	STOCK
<b>Related Documents</b>														
	0.5	1	1			Schematic 103695a (803695), Model 353	1D203695 Rev.A	Designed by Andrey Filippov						
	20	1	1			Fabrication (803695), Model 353	4F203695 Rev.A							
	21	1	1			Artwork (803695), Model 353	4G203695 Rev.A							
<b>Integrated Circuits</b>														
U2	40	1	1		Y	5-tap Delay Line, <b>20NS</b> , uMAX-8, marked as <b>D6</b>	DS1100LU-20+	Maxim	Digi-Key	DS1100LU-20+-ND	1	8.76	8.76	0
U3	41	1	1		Y	8 bit I2C poer with 2Kb EEPROM, HVQFN-16	PCA9500BS	NXP Semiconductors	Digi-Key	568-3351-1-ND	1	1.78	1.78	0
U4	42	1	1		Y	Dual FF with preset and clear, VQFN-14, marked as <b>HA74</b>	SN74AHC74RGYR	Texas Instruments	Digi-Key	296-13904-1-ND	1	0.46	0.46	0
U1	43	1	1		Y	Dual Shmitt Inverter, UDFN-6	NLU2G14MUTCG	ON Semiconductor	Digi-Key	NLU2G14MUTC GOSCT-ND	1	0.57	0.57	0
U7	44	1	1		Y	Single 2-input MUX, SOT-363	74LVC1G157GW	NXP Semiconductors	Digi-Key	568-3008-1-ND	1	0.55	0.55	0
U6	45	1	1		Y	Single D-type Flip-Flop, SOT-553, marked as <b>D6</b>	SN74LVC1G79DR LR	Texas Instruments	Digi-Key	296-18019-1-ND	1	0.58	0.58	0
U5	46	1	1		Y	Single D-type Flip-Flop with CLEAr, WDFDN-6, marked as <b>LFCT</b>	LTC6994CDCB-1	Linear Technology	Digi-Key	LTC6994CDCB-1	1	3.33	3.33	0
<b>Power Supply Modules</b>														
DC1	47	1	1		Y	Low Input Volatge Boost Converter, Adjustable, <b>ADJ</b> , <b>300mA</b> , VFDFN-10, marked as <b>BRR</b>	TPS61200DRCT	Texas Instruments	Digi-Key	296-21683-1-ND	1	3.9	3.9	0
<b>Resistors</b>														
R1	48	1	1		Y	Resistor, <b>10KΩ</b> , <b>±1%</b> , SMD 0402, marked as <b>1002</b>	RC0402FR-0710KL	Yageo	Digi-Key	311-10.0KLRCT-ND	10	0.094	0.94	9

DESIGNATOR	ITEM	QTY	EXT	STK	ROHS		PART	MANUFAC		VENDOR	PURCH	UNIT		NEW
NUMBER	#	REQ	QTY	CHK		DESCRIPTION	#	TURER	VENDOR	PART #	QTY	PRICE	TOTAL	STOCK
-----	----	---	----	---	----	-----	-----	-----	-----	-----	-----	----	----	----
R2	49	1	1		Y	Resistor, <b>20K<math>\Omega</math>, <math>\pm</math>1%</b> , SMD 0402, marked as <b>2002</b>	RC0402FR-0720KL	Yageo	Digi-Key	311-20.0KLRCT-ND	10	0.094	0.94	9
R5	50	1	1		Y	Resistor, <b>150K<math>\Omega</math>, <math>\pm</math>1%</b> , SMD 0402, marked as <b>1503</b>	RC0402FR-07150KL	Yageo	Digi-Key	311-150KLRCT-ND	10	0.094	0.94	9
R3	51	1	1		Y	Resistor, <b>287K<math>\Omega</math>, <math>\pm</math>1%</b> , SMD 0402, marked as <b>2873</b>	ERJ-2RKF2873X	Panasonic	Digi-Key	P287KLCT-ND	10	0.098	0.98	9
R4	52	1	1		Y	Resistor, <b>845K<math>\Omega</math>, <math>\pm</math>1%</b> , SMD 0402, marked as <b>8453</b>	ERJ-2RKF8453X	Panasonic	Digi-Key	P845KLCT-ND	1	0.06	0.06	0
						<b>Capacitors</b>								
C1	53	1	1		Y	Low profile Tantalum Chip Capacitor, ESR=1.1 Ohm, <b>47<math>\mu</math>F, 4V</b> , 3216-08	F950G476MQAAQ2	Nichicon	Digi-Key	493-2891-1-ND	10	0.578	5.78	9
C3, C6-C7	54	3	3		Y	Capacitor, Ceramic Chip, X5R,20%, <b>10<math>\mu</math>F, 6.3V</b> , C-0603	ECJ-1VB0J106M	Panasonic	Digi-Key	PCC2395CT-ND	3	0.45	1.35	0
C8	55	1	1		Y	General Purpose Tantalum Chip Capacitor, <b>100<math>\mu</math>F, 6.3V</b> , 3216-12	TCTAL0J107M8R	Rohm	Digi-Key	511-1498-1-ND	1	0.75	0.75	0
C2, C4-C5, C9-C13	56	8	8		Y	Capacitor, Ceramic Chip, <b>0.1<math>\mu</math>F, 10V</b> , C0402D	C0402C104K8PACTU	Kemet	Digi-Key	399-3027-1-ND	10	0.083	0.83	2
						<b>Inductors and LC filters</b>								
L2	57	1	1		Y	SMD Inductor, 82mOhm, .3mm x 3mm, <b>2.2<math>\mu</math>Hn, 1.15A</b> , L-1212	LQH3NPN2R2NJ0L	Murata	Digi-Key	490-5344-1-ND	1	0.37	0.37	0
L1	58	1	1		Y	SMD Inductor, 120 Ohm, <b>1.2A</b> , SMD 0402	MPZ1005S121C	TDK	Digi-Key	445-2981-1-ND	1	0	0	0
						<b>Connectors</b>								
J3	59	1	1		Y	1.25mm Pitch Super Low profile Crimping Connector, 2 pins, Right angle SMT header, 2 contacts, <b>150V, 1A</b> , DF142P125H	DF14-2P-1.25H-55	Hirose	Digi-Key	H10311-ND	1	1.25	1.25	0
J13	60	1	1		Y	1.25mm Pitch Super Low profile Crimping Connector, 2 pos., Crimp Socket, <b>150V, 1A</b> , DF142S125C	DF14-2S-1.25C	Hirose	Digi-Key	H1563-ND	1	0.54	0.54	0
J1	61	1	1		Y	0.5 mm-Pitch Flip-Lock FPC Connector, top contact, 10 pos., FH12A-10S-0.5SH55	FH12A-10S-0.5SH55	Hirose	Digi-Key	HFK110CT-ND	1	1.77	1.77	0
J2	62	1	1		Y	Double Row Socket, Low profile, 1mm grid, 24 pos, CLM-112-02	CLM-112-02	Samtec	Digi-Key	SAM1129-12-ND	1	5.5	5.5	0
						<b>Sockets and Matching Parts</b>								
XJ13	63	2	2			1.25mm Pitch Super Low profile Crimping Connector, 26-28AWG Crimp Gold Terminal, DF142628SCFA	DF14-2628SCFA	Hirose	Digi-Key		0	0	0	-2



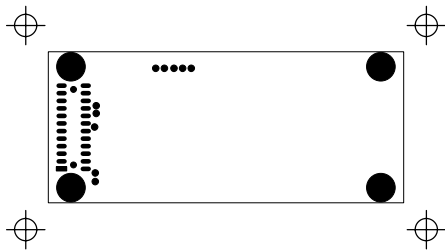
SILKSCREEN TOP			

Copyright (c) 2011 Elphe, Inc.  
Permission is granted to copy, distribute and/or modify this document  
under the terms of the GNU Free Documentation License, Version 1.3  
or any later version published by the Free Software Foundation;  
with no Invariant Sections, no Front-Cover Texts, and no Back-Cover Texts.  
A copy of the license is included in the section entitled "GNU  
Free Documentation License".



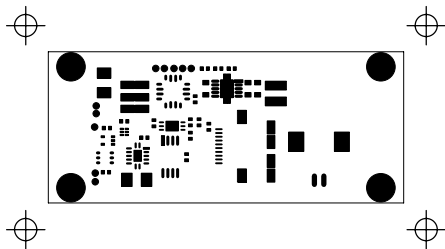
SILKSCREEN BOTTOM			
-------------------	--	--	--

Copyright (c) 2011 Elphel, Inc.  
 Permission is granted to copy, distribute and/or modify this document  
 under the terms of the GNU Free Documentation License, Version 1.3,  
 or any later version published by the Free Software Foundation,  
 with an invariant section on Front-Cover Texts and on Back-Cover Texts.  
 A copy of the license is included in the section entitled "GNU  
 Free Documentation License."



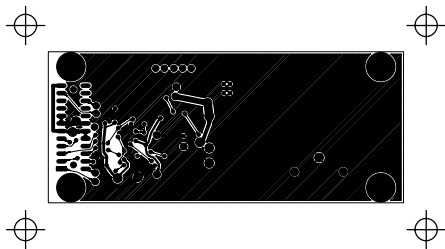
	SOLDER MASK TOP		

Copyright (c) 2011 Elphel, Inc.  
 Permission is granted to copy, distribute and/or modify this document  
 under the terms of the GNU Free Documentation License, Version 1.3  
 or any later version published by the Free Software Foundation;  
 with no Invariant Sections, no Front-Cover Texts, and no Back-Cover Texts.  
 A copy of the license is included in the section entitled "GNU  
 Free Documentation License".



		SOLDER MASK BOTTOM	

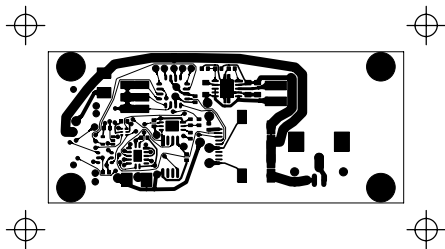
Copyright (c) 2011 Elphel, Inc.  
Permission is granted to copy, distribute and/or modify this document  
under the terms of the GNU Free Documentation License, Version 1.3  
or any later version published by the Free Software Foundation;  
with no Invariant Sections, no Front-Cover Texts, and no Back-Cover Texts.  
A copy of the license is included in the section entitled "GNU  
Free Documentation License".



TOP SIDE (LAYER-1)			
	COMPONENT COPPER TOP (L-18)	COMPONENT COPPER BOTTOM (L-19)	

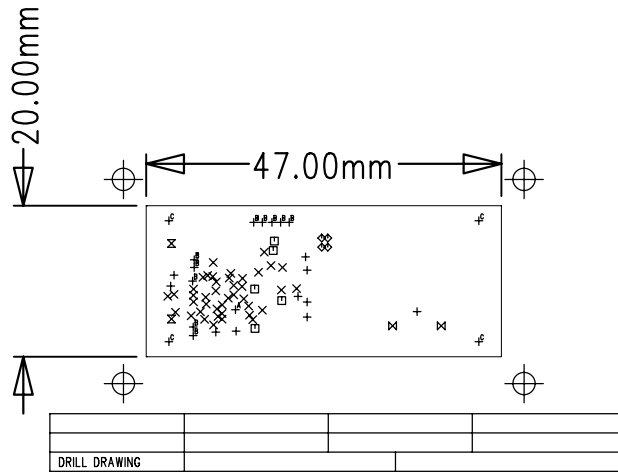
Copyright (c) 2011 Elphel, Inc.  
 Permission is granted to copy, distribute and/or modify this document  
 under the terms of the GNU Free Documentation License, Version 1.3  
 or any later version published by the Free Software Foundation;  
 with no Invariant Sections, no Front-Cover Texts, and no Back-Cover Texts.  
 A copy of the license is included in the section entitled "GNU  
 Free Documentation License".





			BOTTOM SIDE (LAYER-4)

Copyright (c) 2011 Elphel, Inc.  
Permission is granted to copy, distribute and/or modify this document  
under the terms of the GNU Free Documentation License, Version 1.3  
or any later version published by the Free Software Foundation;  
with no Invariant Sections, no Front-Cover Texts, and no Back-Cover Texts.  
A copy of the license is included in the section entitled "GNU  
Free Documentation License".

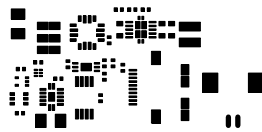


Copyright (c) 2011 Elphel, Inc.  
 Permission is granted to copy, distribute and/or modify this document  
 under the terms of the GNU Free Documentation License, Version 1.3  
 or any later version published by the Free Software Foundation;  
 with no Invariant Sections, no Front-Cover Texts, and no Back-Cover Texts.  
 A copy of the license is included in the section entitled "GNU  
 Free Documentation License".

SIZE	QTY	SYM	PLTD
32	10	+	PLTD
10	41	×	PLTD
22	5	□	PLTD
11.81	4	◇	PLTD
22.05	2	⊗	PLTD
43.31	2	⊗	NPLTD
9.84	1	A	PLTD
25	10	B	PLTD
87	4	C	NPLTD




Copyright (c) 2011 Elphe, Inc.  
Permission is granted to copy, distribute and/or modify this document  
under the terms of the GNU Free Documentation License, Version 1.3  
or any later version published by the Free Software Foundation;  
with no Invariant Sections, no Front-Cover Texts, and no Back-Cover Texts.  
A copy of the license is included in the section entitled "GNU  
Free Documentation License".




Copyright (c) 2011 Elphe, Inc.  
Permission is granted to copy, distribute and/or modify this document  
under the terms of the GNU Free Documentation License, Version 1.3  
or any later version published by the Free Software Foundation;  
with no Invariant Sections, no Front-Cover Texts, and no Back-Cover Texts.  
A copy of the license is included in the section entitled "GNU  
Free Documentation License".