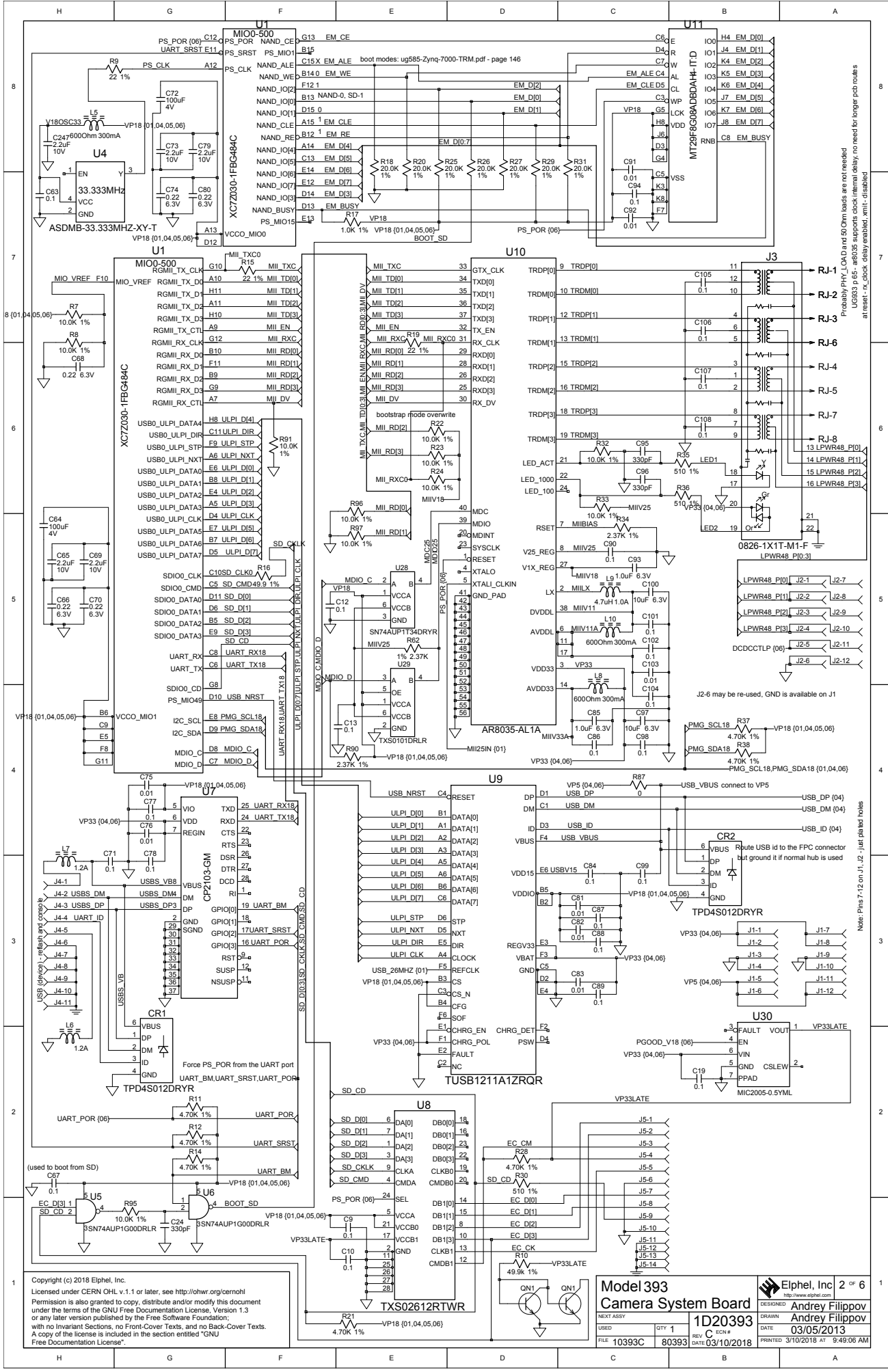


pPOWER - USE 2X8A module (2x4A?) for 1.0+1.8V
 Use LTC3589 for 1.5V@1.6A (DDR3- all), 2 other buck - 2 HR baanks VCC0 set at 1.5V initial (1.34V..2.789V)
 LDO - PLL_ADC_???
 PUDC_B - 0 - enable weak pullup during config (PS)
 VCCPINT (PS) - 1.0V
 VCCPAUX (PS) - 1.8V
 VCC0_MIO0 (PS) - 1.8V
 VCC0_MIO1 (PS) - 1.8V
 VCC0_DDR (PS) - 1.5V
 VCC_PLL(PS) - 1.8V
 VCC_AUX (PL) - 1.8V
 VCCPAUX_IO_SF - not used in this package
 VCCBRAM (PL) 1.0V
 VCCBATT is required only when using bitstream encryption. If battery is not used, connect VCCBATT to either GND or VCCPAUX
 PS_MIO_VREF - 0.9V (VCCMIO12) - done
 After boot "SHUT_DOWN" will be pulled low by a resistor, so CLOCK_ALARM will be low (on) keeping input DC-DC on
 When input power is re-applied to the DC-DC (after being off) Q2 will be kept off while capacitor is charging

Copyright (c) 2018 Elphel, Inc.
 Licensed under CERN OHL v.1.1 or later, see <http://ohw.org/cernohl>
 Permission is also granted to copy, distribute and/or modify this document under the terms of the GNU Free Documentation License, Version 1.3 or any later version published by the Free Software Foundation, with no Invariant Sections, no Front-Cover Texts, and no Back-Cover Texts. A copy of the license is included in the section entitled "GNU Free Documentation License".

SHUT_DOWN - one of the unused MIO (GPIO) pins

Model 393		Elphel, Inc		1 of 6
Camera System Board		DESIGNED BY		Andrey Filippov
NEXT ASSY		DRAWN		Andrey Filippov
USED		DATE		03/05/2013
FILE	10393C	REV	C 10/4	PRINTED
QTY	1	DATE	3/10/2018	AT
80393				9:49:06 AM

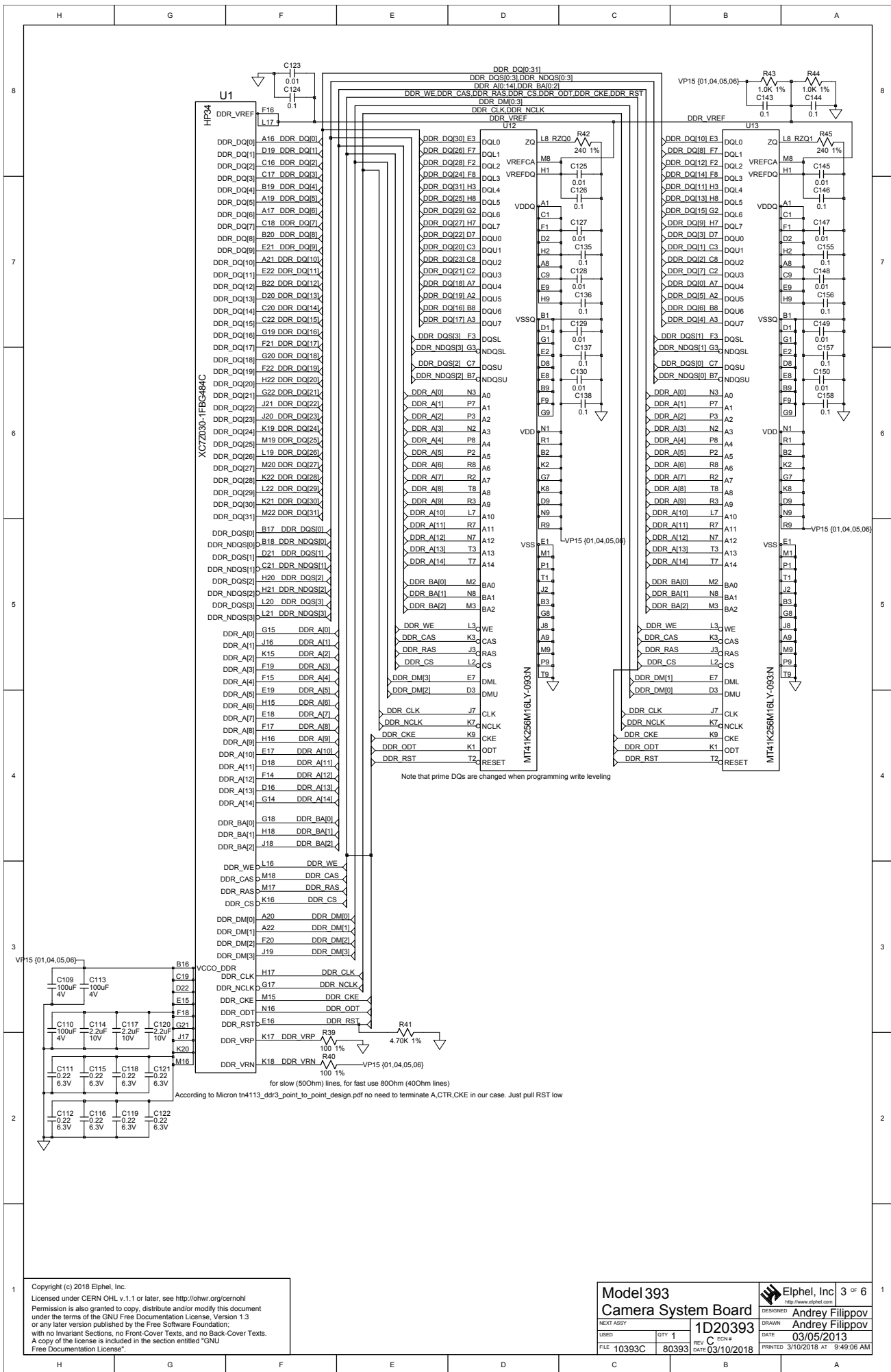


Copyright (c) 2018 Elphel, Inc.
 Licensed under CERN OHL v.1.1 or later, see <http://ohwr.org/cernohl>
 Permission is also granted to copy, distribute and/or modify this document under the terms of the GNU Free Documentation License, Version 1.3 or any later version published by the Free Software Foundation, with no Invariant Sections, no Front-Cover Texts, and no Back-Cover Texts. A copy of the license is included in the section entitled "GNU Free Documentation License".

Model 393		Elphel, Inc.	
Camera System Board		DESIGNED Andrey Filippov	
NEXT ASSY	1D20393	DRAWN	Andrey Filippov
USED	QTY 1	DATE	03/05/2013
FILE	10393C	REV	C 10/18
	80393	PRINTED	3/10/2018 AT 9:49:06 AM

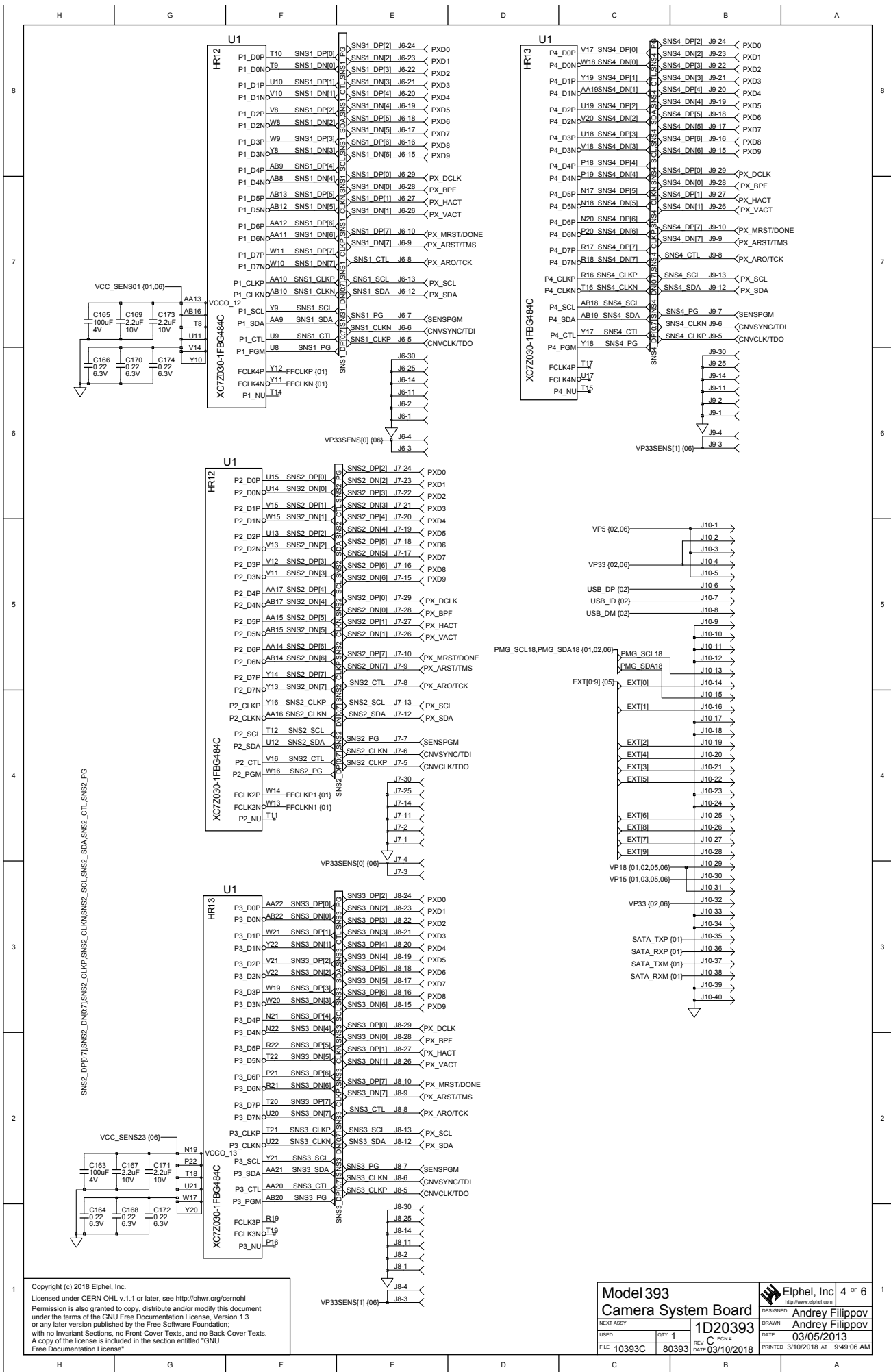
Probably PHY_LOAD and 50 Ohm loads are not needed
 UG933 p65 - ar8035 supports clock internal delay, no need for longer PCB routes
 at reset - rx_check delay enabled, emit disabled

J2-6 may be re-used, GND is available on J1
 Note: Pins 7, 12 on J1, J2, J12 just plated holes

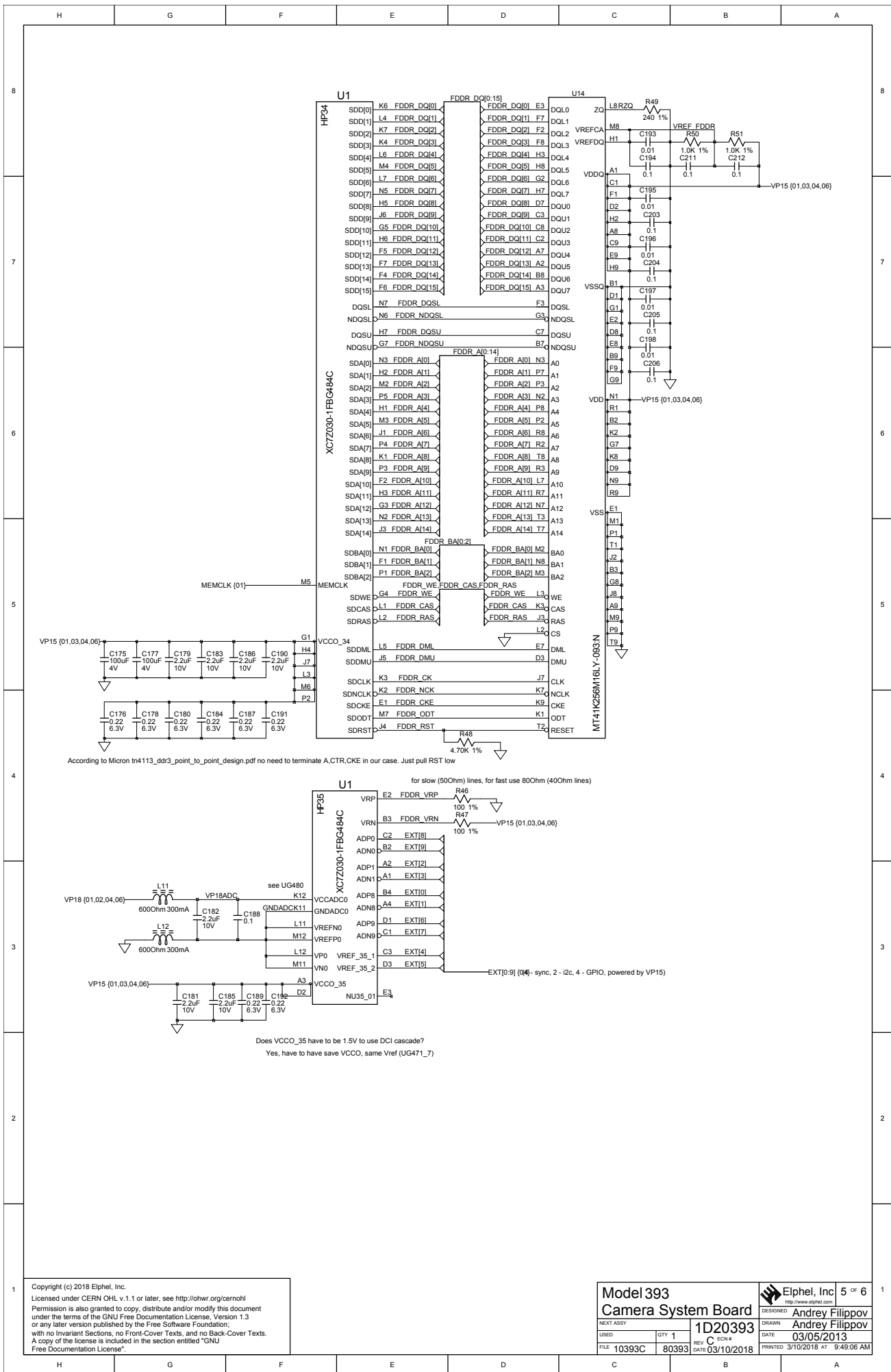


Copyright (c) 2018 Elphel, Inc.
 Licensed under CERN OHL v.1.1 or later, see <http://ohw.org/cernohl>
 Permission is also granted to copy, distribute and/or modify this document under the terms of the GNU Free Documentation License, Version 1.3 or any later version published by the Free Software Foundation, with no Invariant Sections, no Front-Cover Texts, and no Back-Cover Texts. A copy of the license is included in the section entitled "GNU Free Documentation License".

Model 393 Camera System Board		DESIGNED Elphel, Inc. 3 of 6 http://www.elphel.com	
NEXT ASSY		DRAWN Andrey Filippov	
USED	QTY 1	REV C 10/18	DATE 03/05/2013
FILE 10393C	80393	DATE 03/10/2018	PRINTED 3/10/2018 AT 9:49:06 AM

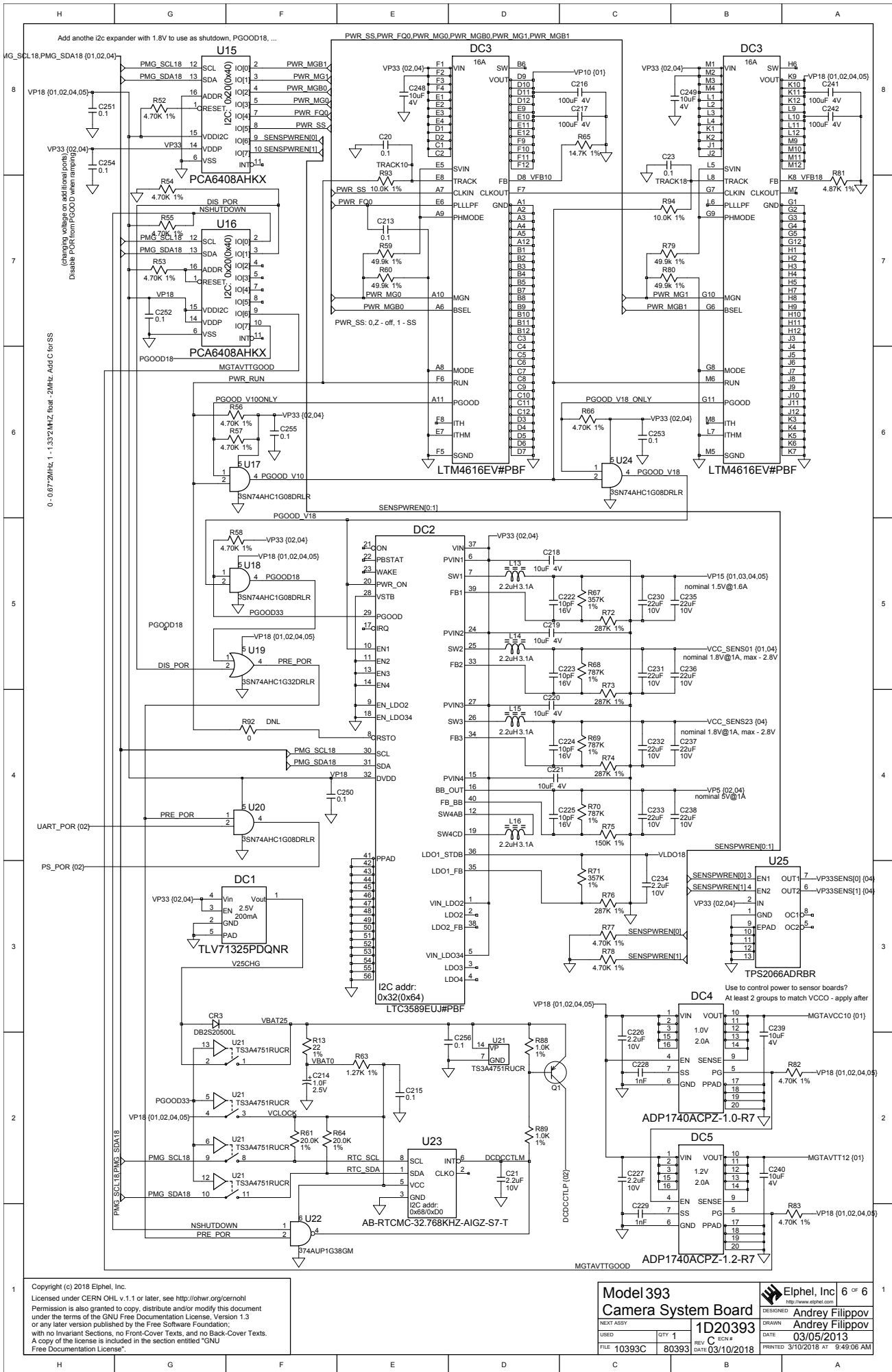


Copyright (c) 2018 Elphel, Inc.
Permission is granted to copy, distribute and/or modify this document under the terms of the GNU Free Documentation License, Version 1.3 or any later version published by the Free Software Foundation, with no Invariant Sections, no Front-Cover Texts, and no Back-Cover Texts. A copy of the license is included in the section entitled "GNU Free Documentation License".



Copyright (c) 2018 Elphel, Inc.
Licensed under CERN OHL v.1.1 or later, see <http://ohwr.org/cernohl>
Permission is also granted to copy, distribute and/or modify this document under the terms of the GNU Free Documentation License, Version 1.3 or any later version published by the Free Software Foundation, with no Invariant Sections, no Front-Cover Texts, and no Back-Cover Texts. A copy of the license is included in the section entitled "GNU Free Documentation License".

Model 393		Elphel, Inc. 5 of 6	
Camera System Board		DESIGNED BY: Andrey Filippov	
NEXT ASSY	QTY 1	1D20393	DATE: 03/05/2013
USED	FILE 10393C	REV C 10393	PRINTED 3/10/2018 AT 9:49:06 AM
		DATE: 03/10/2018	



Copyright (c) 2018 Elphel, Inc.
 Licensed under CERN OHL v.1.1 or later, see <http://ohw.org/cernohl>
 Permission is also granted to copy, distribute and/or modify this document under the terms of the GNU Free Documentation License, Version 1.3 or any later version published by the Free Software Foundation, with no Invariant Sections, no Front-Cover Texts, and no Back-Cover Texts. A copy of the license is included in the section entitled "GNU Free Documentation License".

Model 393		Elphel, Inc. 6 of 6	
Camera System Board		DESIGNED: Andrey Filippov	
NEXT ASSY	1D20393	DATE	03/05/2013
USED	QTY 1	REV. C	15/4
FILE 10393C	80393	DATE	3/10/2018 AT 9:49:06 AM

SUB-ASSEMBLY															
USAGE	#		NO.					RELEASE DATE	03/09/18	P/L	REV.	REV.	Units to	Total	Cost per
393	1		TITLE	Model 393 Camera System Board				JOB#	N/A	3/5/2013	C	9/27/2017	1	\$406.47	\$406.47
		# TO	MFGR	1				WORK ORDER #	N/A						
		NEXT	ASSY	4A-?????				NON STANDARD NOTATIONS							
DESIGNATOR	ITEM	QTY	EXT	STK	ROHS	DESCRIPTION		PART	MANUFAC	VENDOR	PURCH	UNIT	TOTAL	NEW	
NUMBER	#	REQ	QTY	CHK			#	TURER	VENDOR	PART #	QTY	PRICE	TOTAL	STOCK	
Related Documents															
	0.5	1	1			Schematic 10393C (80393), Model 393	1D20393 Rev.C	Designed by Andrey Filippov							
	20	1	1			Fabrication (80393), Model 393	4F20393 Rev.C								
	21	1	1			Artwork (80393), Model 393	4G20393 Rev.C								
Integrated Circuits															
U12-U14	40	3	3		Y	DDR3 Synchronous DRAM, 4Gbit (256Mx16), 256MX16, 1.5V , FBGA-96-TW	MT41K256M16LY-093:N	Micron			0	0	0	-3	
U11	41	1	1		Y	8Gb (1Gx8) NAND Flash, 1GX8, 1.8V , VFBGA-63-9x11	MT29F8G08ADBBD AH4-IT:D	Micron	Arrow		1	10.575	10.575	0	
U7	42	1	1		Y	USB to UART bridge with GPIO, 3.3V , QFN-28	CP2103-GM	Silicon Laboratories	Digi-Key	336-1164-ND	1	5.36	5.36	0	
U2, U26	43	2	2		Y	Oscillator MEMS, 25MHZ , OSC4-2520	ASDMB-25.000MHZ-XY-T	Abracon Corporation	Digi-Key	535-11157-1-ND	2	3.64	7.28	0	
U27	44	1	1		Y	Oscillator MEMS, 26MHZ , OSC4-2520	ASDMB-26.000MHZ-XY-T	Abracon Corporation	Digi-Key	535-11158-1-ND	1	3.64	3.64	0	
U4	45	1	1		Y	Oscillator MEMS, 33.333MHZ , OSC4-2520	ASDMB-33.333MHZ-XY-T	Abracon Corporation	Digi-Key	535-11143-1-ND	1	3.64	3.64	0	
U22	46	1	1		Y	2 Input NAND Gate, Open Drain, 0.5µA , XSON-6, marked as aB	74AUP1G38GM	NXP Semiconductors	Digi-Key	568-9156-1-ND	1	0.68	0.68	0	
U15-U16	47	2	2		Y	8 bit I2C 8-bit I/O port with 3-state outputs, XQFN-16, marked as P8	PCA6408AHKX	NXP Semiconductors	Digi-Key	568-9909-1-ND	2	1.7	3.4	0	
U25	48	1	1		Y	Dual Current-Limited Power Distribution Switch, SON-8	TPS2066ADRBR	Texas Instruments	Digi-Key	296-23393-1-ND	1	1.78	1.78	0	

DESIGNATOR	ITEM	QTY	EXT	STK	ROHS		PART	MANUFAC		VENDOR	PURCH	UNIT	TOTAL	NEW
NUMBER	#	REQ	QTY	CHK		DESCRIPTION	#	TURER	VENDOR	PART #	QTY	PRICE	TOTAL	STOCK
-----	----	---	----	---	----	-----	-----	-----	-----	-----	-----	----	----	----
U3	49	1	1		Y	Four Channel MyltiSynth CLock Generator with Single low-jitter PLL, 1.8V, QFN-24-1MM	SI5338A-B-GM	Silicon Laboratories	Digi-Key	336-4326-1-ND	1	14.79	14.79	0
U10	50	1	1		Y	Gigabit Ethernet Transceiver, QFN-40	AR8035-AL1A	Atheros	http://www.arrow.com/		1	10	10	0
U21	51	1	1		Y	Quad SPST-NO Analog Switch, VQFN-14, marked as 3M	TS3A4751RUCR	Texas Instruments	Digi-Key	296-24478-1-ND	1	1.36	1.36	0
U23	52	1	1		Y	Real Time Clock/Calendar with I2C, RTC , WCDNF-8	AB-RTCMC-32.768KHZ-AIGZ-S7-T	Abracon Corporation	Digi-Key	535-12052-1-ND	1	5.14	5.14	0
U8	53	1	1		Y	SDIO port expander, WQFN-24	TXS02612RTWR	Texas Instruments	Digi-Key	296-23869-1-ND	1	1.7	1.7	0
U17-U18, U20, U24	54	4	4		Y	Single 2-AND Gate, SOT-553, marked as AE?	SN74AHC1G08DRLR	Texas Instruments	Digi-Key	296-19376-1-ND	1000	0	0	996
U5-U6	55	2	2		Y	Single 2-NAND Gate, SOT-553, marked as HA7~HAR	SN74AUP1G00DRLR	Texas Instruments	Digi-Key	296-18712-1-ND	2	0.44	0.88	0
U19	56	1	1		Y	Single 2-OR Gate, SOT-553, marked as AG_	SN74AHC1G32DRLR	Texas Instruments	Digi-Key	296-19378-1-ND	1	0.54	0.54	0
U29	57	1	1		Y	Single Bidirectional Level Shifter, SOT-563, marked as 2G_	TXS0101DRLR	Texas Instruments	Digi-Key	296-22865-1-ND	1	0.82	0.82	0
U30	58	1	1		Y	Single Channel Power Distribution Switch, MLF-6, marked as F05	MIC2005-0.5YML	Micrel	Digi-Key	576-1678-1-ND	1	1.83	1.83	0
U28	59	1	1		Y	Single Unidirectional Level Shifter, UDFN-6, marked as U2	SN74AUP1T34DRYR	Texas Instruments	Mouser	595-SN74AUP1T34DRYR	1	0.59	0.59	0
U9	60	1	1		Y	USB Transceiver, VFBGA-36	TUSB1211A1ZRQR	Texas Instruments	Digi-Key	296-28357-1-ND	1	2.73	2.73	0
U1	61	1	1		Y	ZZynq 7030 configured for 10393, FBG484	XC7Z030-1FBG484C	Xilinx	Avnet	XC7Z030-1FBG484C	1	150	150	0
-----	----	---	----	---	----	Power Supply Modules	-----	-----	-----	-----	-----	----	----	----
DC4	62	1	1		Y	LDO regulator, 1V, 2A , VQFN-16	ADP1740ACPZ-1.0-R7	Analog Devices	Digi-Key	ADP1740ACPZ-1.0-R7CT-ND	1	3.11	3.11	0
DC5	63	1	1		Y	LDO regulator, 1.2V, 2A , VQFN-16	ADP1740ACPZ-1.2-R7	Analog Devices	Digi-Key	ADP1740ACPZ-1.2-R7CT-ND	1	3.11	3.11	0
DC1	64	1	1		Y	LDO regulator, 2.5V, 200mA , X2SON-4, marked as AZ	TLV71325PDQNR	Texas Instruments	Digi-Key	296-35468-1-ND	1	0.47	0.47	0
DC3	65	1	1		Y	Dual 8A per Channel Low Vin DC/DC uModule, 16A , LGA-144	LTM4616EV#PBF	Linear Technology	Digi-Key	LTM4616EV#PBF-ND	1	33.23	33.23	0
DC2	66	1	1		Y	Power Management IC for Li-Ion Powered Systems, VFQFN-40	LTC3589EUJ#PBF	Linear Technology	Digi-Key	LTC3589EUJ#PBF-ND	1	7.3	7.3	0
-----	----	---	----	---	----	Transistors	-----	-----	-----	-----	-----	----	----	----
Q1	67	1	1		Y	Transistor PNP, 45V, 500mA , SOT-723, marked as BW	2SA2030T2L	Rohm	Digi-Key	2SA2030T2LCT-ND	1	0.51	0.51	0

DESIGNATOR	ITEM	QTY	EXT	STK	ROHS		PART	MANUFAC		VENDOR	PURCH	UNIT	TOTAL	NEW
NUMBER	#	REQ	QTY	CHK		DESCRIPTION	#	TURER	VENDOR	PART #	QTY	PRICE		STOCK
-----	----	---	----	---	----	-----	-----	-----	-----	-----	-----	----	----	----
QN1	68	1	1		Y	Dual matched NPN transistors, 45V, 100mA , SOT-666, marked as EA	PMP4201V	Nexperia	Digi-Key	1727-5850-1-ND	1	0.53	0.53	0
						Diodes								
CR1-CR2	69	2	2		Y	4-Line ESD Protection with Clamp, 5V, 12A, 60W , UFDFN-6, marked as F5	TPD4S012DRYR	Texas Instruments	Digi-Key	751-1413-1-ND	2	0.78	1.56	0
CR3	70	1	1		Y	Schottky Barrier Diode, 15V, 200mA , SOD-523, marked as BA	DB2S20500L	Panasonic	Digi-Key	ZHCS500CT-ND	1	0.3	0.3	0
						Resistors								
R9, R13, R15, R19, R84-R86	71	7	7		Y	Resistor, 22Ω, ±1% , SMD 0201, marked as 22R0	ERJ-1GEF22R0C	Panasonic	Digi-Key	P22.0ABCT-ND	7	0	0	0
R16	72	1	1		Y	Resistor, 49.9Ω, ±1% , SMD 0201, marked as 49R9	ERJ-1GEF49R9C	Panasonic	Digi-Key	P49.9ABCT-ND	10	0.11	1.1	9
R6, R39-R40, R46-R47	73	5	5		Y	Resistor, 100Ω, ±1% , SMD 0201, marked as 1000	ERJ-1GEF1000C	Panasonic	Digi-Key	P100ABCT-ND	10	0.11	1.1	5
R42, R45, R49	74	3	3		Y	Resistor, 240Ω, ±1% , SMD 0201, marked as 2400	ERJ-1GEF2400C	Panasonic	Digi-Key	P240ABCT-ND	10	0.11	1.1	7
R30, R35-R36	75	3	3		Y	Resistor, 510Ω, ±1% , SMD 0201, marked as 5100	ERJ-1GEF5100C	Panasonic	Digi-Key	P510ABCT-ND	3	0	0	0
R17, R43-R44, R50-R51, R88-R89	76	7	7		Y	Resistor, 1KΩ, ±1% , SMD 0201, marked as 1001	ERJ-1GEF1001C	Panasonic	Digi-Key	P1.00KABCT-ND	10	0.11	1.1	3
R63	77	1	1		Y	Resistor, 1.27KΩ, ±1% , SMD 0201, marked as 1271	ERJ-1GEF1271C	Panasonic	Digi-Key	P1.27KABCT-ND	10	0.11	1.1	9
R34, R62, R90	78	3	3		Y	Resistor, 2.37KΩ, ±1% , SMD 0201, marked as 2371	ERJ-1GEF2371C	Panasonic	Digi-Key	P2.37KABCT-ND	3	0	0	0
R1-R5, R11-R12, R14, R21, R28, R37-R38, R41, R48, R52-R58, R66, R77-R78, R82-R83	79	26	26		Y	Resistor, 4.7KΩ, ±1% , SMD 0201, marked as 4701	ERJ-1GEF4701C	Panasonic	Digi-Key	P4.70KABCT-ND	26	0.11	2.86	0
R81	80	1	1		Y	Resistor, 4.87KΩ, ±1% , SMD 0201, marked as 4871	ERJ-1GEF4871C	Panasonic	Digi-Key	P4.87KABCT-ND	1	0.11	0.11	0
R7-R8, R22-R24, R32-R33, R91, R93-R97	81	13	13		Y	Resistor, 10KΩ, ±1% , SMD 0201, marked as 1002	ERJ-1GEF1002C	Panasonic	Digi-Key	P10.0KABCT-ND	13	0.11	1.43	0
R65	82	1	1		Y	Resistor, 14.7KΩ, ±1% , SMD 0201, marked as 1472	ERJ-1GEF1472C	Panasonic	Digi-Key	P14.7KABCT-ND	1	0.11	0.11	0
R18, R20, R25-R27, R29, R31, R61, R64	83	9	9		Y	Resistor, 20KΩ, ±1% , SMD 0201, marked as 2002	ERJ-1GEF2002C	Panasonic	Digi-Key	P20.0KABCT-ND	10	0.11	1.1	1
R10, R59-R60, R79-R80	84	5	5		Y	Resistor, 49.9KΩ, ±1% , SMD 0201, marked as 4992	ERJ-1GEF4992C	Panasonic	Digi-Key	P49.9KABCT-ND	5	0.11	0.55	0

DESIGNATOR	ITEM	QTY	EXT	STK	ROHS		PART	MANUFAC		VENDOR	PURCH	UNIT	TOTAL	NEW
NUMBER	#	REQ	QTY	CHK		DESCRIPTION	#	TURER	VENDOR	PART #	QTY	PRICE	TOTAL	STOCK
-----	----	---	----	---	----	-----	-----	-----	-----	-----	-----	----	----	----
R75	85	1	1		Y	Resistor, 150KΩ, \pm1% , SMD 0201, marked as 1503	ERJ-1GEF1503C	Panasonic	Digi-Key	P150KABCT-ND	10	0.11	1.1	9
R72-R74, R76	86	4	4		Y	Resistor, 287KΩ, \pm1% , SMD 0201, marked as 2873	ERJ-1GEF2873C	Panasonic	Digi-Key	P287KABCT-ND	10	0.11	1.1	6
R67, R71	87	2	2		Y	Resistor, 357KΩ, \pm1% , SMD 0201, marked as 3573	ERJ-1GEF3573C	Panasonic	Digi-Key	P357KABCT-ND	2	0.11	0.22	0
R68-R70	88	3	3		Y	Resistor, 787KΩ, \pm1% , SMD 0201, marked as 7873	ERJ-1GEF7873C	Panasonic	Digi-Key	P787KABCT-ND	10	0.11	1.1	7
R87, R92	89	2	2		Y	Jumper, 0Ω , SMD 0402, marked as 0	ERJ-2GE0R00X	Panasonic	Digi-Key	P0.0JCT-ND	2	0.05	0.1	0
						Capacitors								
C22, C26, C28	90	3	3		Y	Low ESR (0.012 Ohm), Tantalum Chip Capacitor 6.0mm x 3.2mm x 1.9mm, 330μF, 2.5V , CP-2312	T520L337M2R5A TE012	Kemet	Digi-Key	399-10345-1-ND	3	3.14	9.42	0
C214	91	1	1		Y	Electric Double Layer Capacitors, 1F, 2.5V , D8L22	EECA0EL105	Panasonic	Digi-Key	P6963-ND	1	4.15	4.15	0
C61, C218- C221, C239- C240, C248- C249	92	9	9		Y	Capacitor, Ceramic Chip, X7S,20%, 10μF, 4V , C-0603	C1608X7S0G106 M080AB	TDK	Digi-Key	445-9100-1-ND	9	0.49	4.41	0
C27, C29-C30, C35, C42, C64, C72, C109- C110, C113, C163, C165, C175, C177, C216-C217, C241-C242	93	18	18		Y	Capacitor, Ceramic Chip, X6S,20%, t=1.6mm, 100μF, 4V , C-1206	C3216X6S0G107 M160AC	TDK	Digi-Key	445-6012-1-ND	18	1.025	18.45	0
C33-C34, C36, C75-C76, C81- C83, C91-C92, C103, C123, C125, C127- C130, C145, C147-C150, C193, C195- C198	94	27	27		Y	Capacitor, Ceramic Chip, 0.01μF, 6.3V , C-0201	ECJ-ZEB0J103K	Panasonic	Digi-Key	399-1278-1-ND	27	0.1	2.7	0

DESIGNATOR	ITEM	QTY	EXT	STK	ROHS		PART	MANUFAC		VENDOR	PURCH	UNIT		NEW
NUMBER	#	REQ	QTY	CHK		DESCRIPTION	#	TURER	VENDOR	PART #	QTY	PRICE	TOTAL	STOCK
-----	---	---	----	---	----	-----	-----	-----	-----	-----	-----	----	----	----
C5-C10, C12-C20, C23, C37-C39, C45-C48, C63, C67, C71, C77-C78, C84, C86-C90, C94, C98-C99, C101-C102, C104-C108, C124, C126, C135-C138, C143-C144, C146, C155-C158, C188, C194, C203-C206, C211-C213, C215, C245-C246, C250-C256	95	76	76		Y	Capacitor, Ceramic Chip, 0.1µF, 6.3V, C-0201D	ECJ-ZEB0J104M	Panasonic	Digi-Key	PCC2336CT-ND	100	0.0466	4.66	24
C32, C41, C44, C50, C52, C54, C56, C58, C60, C62, C66, C68, C70, C74, C80, C111-C112, C115-C116, C118-C119, C121-C122, C164, C166, C168, C170, C172, C174, C176, C178, C180, C184, C187, C189, C191-C192	96	37	37		Y	Capacitor, Ceramic Chip, X7S,20%, 0.22µF, 6.3V, C-0201	C0603X7S0J224M030BC	TDK	Digi-Key	445-9075-1-ND	37	0.173	6.401	0
C85, C93	97	2	2		Y	Capacitor, Ceramic Chip, 10%, 1µF, 6.3V, C-0402	ECJ-0EB0J105K	Panasonic	Digi-Key	PCC2393CT-ND	10	0.144	1.44	8
C3-C4, C11	98	3	3		Y	Capacitor, Ceramic Chip, 20%, 4.7µF, 6.3V, C-0402	ECJ-0EB0J475M	Panasonic	Digi-Key	PCC2475CT-ND	10	0.29	2.9	7
C97, C100	99	2	2		Y	Capacitor, Ceramic Chip, X5R,20%, 10µF, 6.3V, C-0603	ECJ-1VB0J106M	Panasonic	Digi-Key	PCC2395CT-ND	2	0.45	0.9	0
C257-C261	100	5	5		Y	Capacitor, Ceramic Chip, 0.1µF, 10V, C-0402D	C0402C104K8PACTU	Kemet	Digi-Key	399-3027-1-ND	10	0.083	0.83	5

DESIGNATOR	ITEM	QTY	EXT	STK	ROHS		PART	MANUFAC		VENDOR	PURCH	UNIT		NEW
NUMBER	#	REQ	QTY	CHK		DESCRIPTION	#	TURER	VENDOR	PART #	QTY	PRICE	TOTAL	STOCK
-----	---	---	----	---	----	-----	-----	-----	-----	-----	-----	----	----	----
C1-C2, C21, C31, C40, C43, C49, C51, C53, C55, C57, C59, C65, C69, C73, C79, C114, C117, C120, C167, C169, C171, C173, C179, C181-C183, C185-C186, C190, C226-C227, C234, C243-C244, C247	101	36	36		Y	Capacitor, Ceramic Chip, X7S,20%, 2.2µF, 10V, C-0402	C1005X7S1A225K050BC	TDK	Digi-Key	445-9097-1-ND	36	0.28	10.08	0
C230-C233, C235-C238	102	8	8		Y	Capacitor, Ceramic Chip, X7S,20%, 22µF, 10V, C-0805	C2012X7S1A226M125AC	TDK	Digi-Key	445-14560-1-ND	8	1.01	8.08	0
C222-C225	103	4	4		Y	Capacitor, Ceramic Chip, 10pF, 16V, C-0201	C0201C100D3GACTU	Kemet	Digi-Key	399-8924-1-ND	10	0.021	0.21	6
C228-C229	104	2	2		Y	Capacitor, Ceramic Chip, 1nF, 25V, C-0201	ECJ-ZEB1E102K	Panasonic	Digi-Key	PCC2130CT-ND	10	0.075	0.75	8
C24, C95-C96	105	3	3		Y	Capacitor, Ceramic Chip, 330pF, 50V, C-0201	ECJ-ZEB1H331K	Panasonic	Digi-Key	PCC2390CT-ND	10	0.075	0.75	7
-----	---	---	----	---	----	Inductors and LC filters	-----	-----	-----	-----	-----	----	----	----
L13-L16	106	4	4		Y	SMD Shielded Inductor, 21mOhm, 4mm x 4mm x 2.1mm, 2.2µHn, 3.1A,	XFL4020-222ME	Coilcraft	Coilcraft		4	2.13	8.52	0
L9	107	1	1		Y	SMD Inductor, 3mm x 3mm x 1.2mm, 4.7µHn, 1A, VLS3012	VLS3012T-4R7M1R0	TDK	Digi-Key	445-3686-1-ND	1	0	0	0
L1-L5, L8, L10-L12, L17-L18	108	11	11		Y	SMD Inductor, 600 Ohm, 600Unknown inductance units - "OHM", 300mA, SMD 0402	BLM15HD601SN1D	Murata	Digi-Key	490-4002-1-ND	11	0	0	0
L6-L7	109	2	2		Y	SMD Inductor, 120 Ohm, 1.2A, SMD 0402	MPZ1005S121C	TDK	Digi-Key	445-2981-1-ND	2	0	0	0
-----	---	---	----	---	----	Connectors	-----	-----	-----	-----	-----	----	----	----
J1-J2	110	2	2		Y	Connector Receptacle Low profile Milli-Grid 2mm, 2 rows, 6contacts total, 500V, 2A, SMD 873400624	0873400624	Molex	Digi-Key	WM18689-ND	2	0.92	1.84	0
J6-J9	111	4	4		Y	0.5 mm-Pitch Vertical Slide-Lock FPC Connector, 30 pos., FH1230S05SV	FH12-30S-0.5SV-55	Hirose	Digi-Key	HFL130CT-ND	4	3.11	12.44	0
J10	112	1	1		Y	Connector Header 40 pins, 0.5mm pitch, DF1240DS05V	DF12-40DS-0.5V	Hirose	Digi-Key	H5217CT-ND	1	1.63	1.63	0
J5	113	1	1		Y	Connector micro-SD, Push In/Pull Out, SMD 1040310811	1040310811	Molex	Digi-Key	WM6357CT-ND	1	1.92	1.92	0

DESIGNATOR	ITEM	QTY	EXT	STK	ROHS		PART	MANUFAC		VENDOR	PURCH	UNIT		NEW
NUMBER	#	REQ	QTY	CHK		DESCRIPTION	#	TURER	VENDOR	PART #	QTY	PRICE	TOTAL	STOCK
-----	---	---	----	---	----	-----	-----	-----	-----	-----	-----	----	----	----
J4	114	1	1		Y	Connector Micro-USB type AB, 5 contacts, no through-holes, 1A , 1981584-1	1981584-1	Tyco Electronics	Digi-Key	A97799CT-ND	1	1.58	1.58	0
J3	115	1	1		Y	Gigabit Ethernet PoE connector with Integrated Magnetics, 0826-1X1T-M1-F	0826-1X1T-M1-F	Bel Fuse	Digi-Key	380-1122-ND	1	10.27	10.27	0