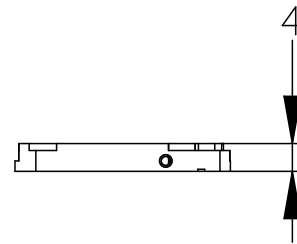
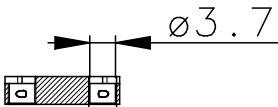
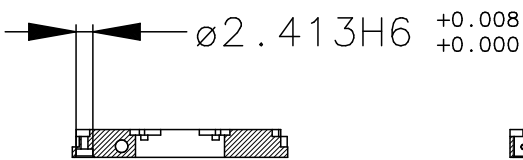
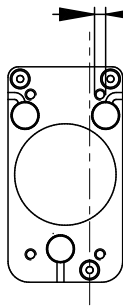
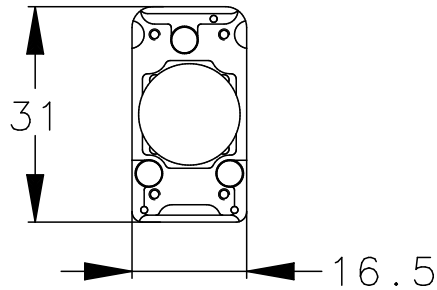


M1.6 THRU 4 HOLES



M4x0.5 THRU 3 HOLES



Revision	Part #	Description		
F	0353-19-65	SFE Plate		
Material	Aluminum 6061-T6	Serial No.		
Finish	Black Anodize	Assembly No.		
Weight(g)	2.7	Date	12/05/2013	Scale 1:1
Surface		Notes Holes 2.413H6 – press fit for 0.095" gauge 13 tubing Protect 2.413H6 from anodizing		
Copyright (c) 2011 Elphel, Inc. Licensed under CERN OHL v.1.1 or later - see http://ohwr.org/cernohl Permission is also granted to copy, distribute and/or modify this document under the terms of the GNU Free Documentation License, Version 1.3 or any later version published by the Free Software Foundation; with no Invariant Sections, no Front-Cover Texts, and no Back-Cover Texts. A copy of the license is included in the section entitled "GNU Free Documentation License".				